



DUTCHMAN RENEWABLE POWER PROJECT

VISUAL SIMULATION

VIEWPOINT 1

TANK FARM ROAD



Print Guide / Image Notes:

This sheet should be printed at 22 by 34 inches; full size with no scaling; and viewed at 28 inches away.
If viewed on a computer monitor, the document should be scaled to 100 percent and viewed at 28 inches.

Existing Condition

PHOTOGRAPH INFORMATION

Date and Time

11/13/2022, 3:08 PM

Camera Information

Nikon Z7, Focal Length 50mm

Viewing Direction

North

Geolocation

Latitude: 42.826226°

Longitude: -105.790344°

Weather Condition

Partly Cloudy

KEY VIEW MAP



Disclaimer

A grading plan was not provided prior to preparation of the simulations, therefore, the simulations are shown on existing topography without proposed grading.

VIEWPOINT 1

TANK FARM ROAD

Original Layout



Print Guide / Image Notes:

This sheet should be printed at 22 by 34 inches; full size with no scaling; and viewed at 28 inches away.
If viewed on a computer monitor, the document should be scaled to 100 percent and viewed at 28 inches.

Visual Simulation

PHOTOGRAPH INFORMATION

Date and Time

11/13/2022, 3:08 PM

Camera Information

Nikon Z7, Focal Length 50mm

Viewing Direction

North

Geolocation

Latitude: 42.826226°

Longitude: -105.790344°

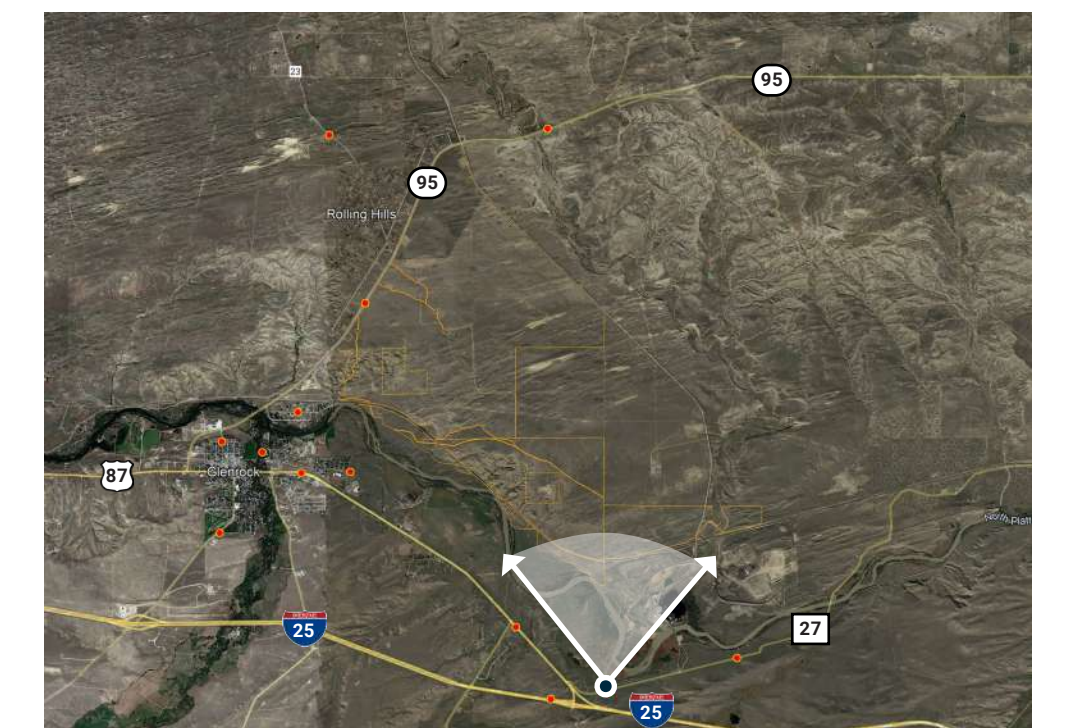
Weather Condition

Partly Cloudy

Distance to the nearest element

1.5 miles to perimeter fence

KEY VIEW MAP



VIEWPOINT 1

TANK FARM ROAD

Updated Layout



Print Guide / Image Notes:

This sheet should be printed at 22 by 34 inches; full size with no scaling; and viewed at 28 inches away.
If viewed on a computer monitor, the document should be scaled to 100 percent and viewed at 28 inches.

Visual Simulation

PHOTOGRAPH INFORMATION

Date and Time

11/13/2022, 3:08 PM

Camera Information

Nikon Z7, Focal Length 50mm

Viewing Direction

North

Geolocation

Latitude: 42.826226°

Longitude: -105.790344°

Weather Condition

Partly Cloudy

Distance to the nearest element

1.4 miles to perimeter fence

KEY VIEW MAP



Disclaimer

A grading plan was not provided prior to preparation of the simulations, therefore, the simulations are shown on existing topography without proposed grading.

VIEWPOINT 3

W BIRCH STREET



Print Guide / Image Notes:

This sheet should be printed at 22 by 34 inches; full size with no scaling; and viewed at 18 inches away.
If viewed on a computer monitor, the document should be scaled to 100 percent and viewed at 18 inches.

Existing Condition

PHOTOGRAPH INFORMATION

Date and Time

11/13/2022, 2:59 PM

Camera Information

Nikon Z7, Focal Length 50mm

Viewing Direction

East

Geolocation

Latitude: 42.836467°

Longitude: -105.810206°

Weather Condition

Partly Cloudy

KEY VIEW MAP



Disclaimer

A grading plan was not provided prior to preparation of the simulations, therefore, the simulations are shown on existing topography without proposed grading.

VIEWPOINT 3

W BIRCH STREET

Original Layout



Print Guide / Image Notes:

This sheet should be printed at 22 by 34 inches; full size with no scaling; and viewed at 18 inches away.
If viewed on a computer monitor, the document should be scaled to 100 percent and viewed at 18 inches.

Visual Simulation

PHOTOGRAPH INFORMATION

Date and Time

11/13/2022, 2:59 PM

Camera Information

Nikon Z7, Focal Length 50mm

Viewing Direction

East

Geolocation

Latitude: 42.836467°

Longitude: -105.810206°

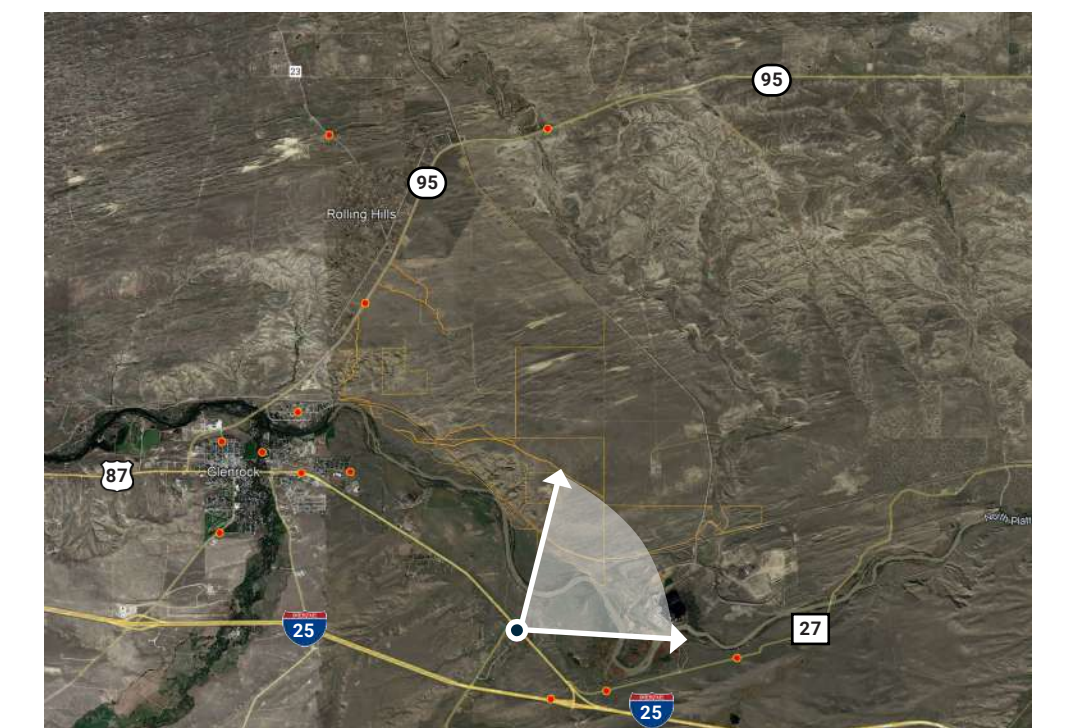
Weather Condition

Partly Cloudy

Distance to the nearest element

1.1 miles to perimeter fence

KEY VIEW MAP



VIEWPOINT 3

W BIRCH STREET

Updated Layout



Print Guide / Image Notes:

This sheet should be printed at 22 by 34 inches; full size with no scaling; and viewed at 18 inches away.
If viewed on a computer monitor, the document should be scaled to 100 percent and viewed at 18 inches.

Visual Simulation

PHOTOGRAPH INFORMATION

Date and Time

11/13/2022, 2:59 PM

Camera Information

Nikon Z7, Focal Length 50mm

Viewing Direction

East

Geolocation

Latitude: 42.836467°

Longitude: -105.810206°

Weather Condition

Partly Cloudy

Distance to the nearest element

1.1 miles to perimeter fence

KEY VIEW MAP



Disclaimer

A grading plan was not provided prior to preparation of the simulations, therefore, the simulations are shown on existing topography without proposed grading.

VIEWPOINT 4

HIGHWAY 95



Print Guide / Image Notes:

This sheet should be printed at 22 by 34 inches; full size with no scaling; and viewed at 18 inches away.
If viewed on a computer monitor, the document should be scaled to 100 percent and viewed at 18 inches.

Existing Condition

PHOTOGRAPH INFORMATION

Date and Time

11/13/2022, 1:57 PM

Camera Information

Nikon Z7, Focal Length 50mm

Viewing Direction

Southeast

Geolocation

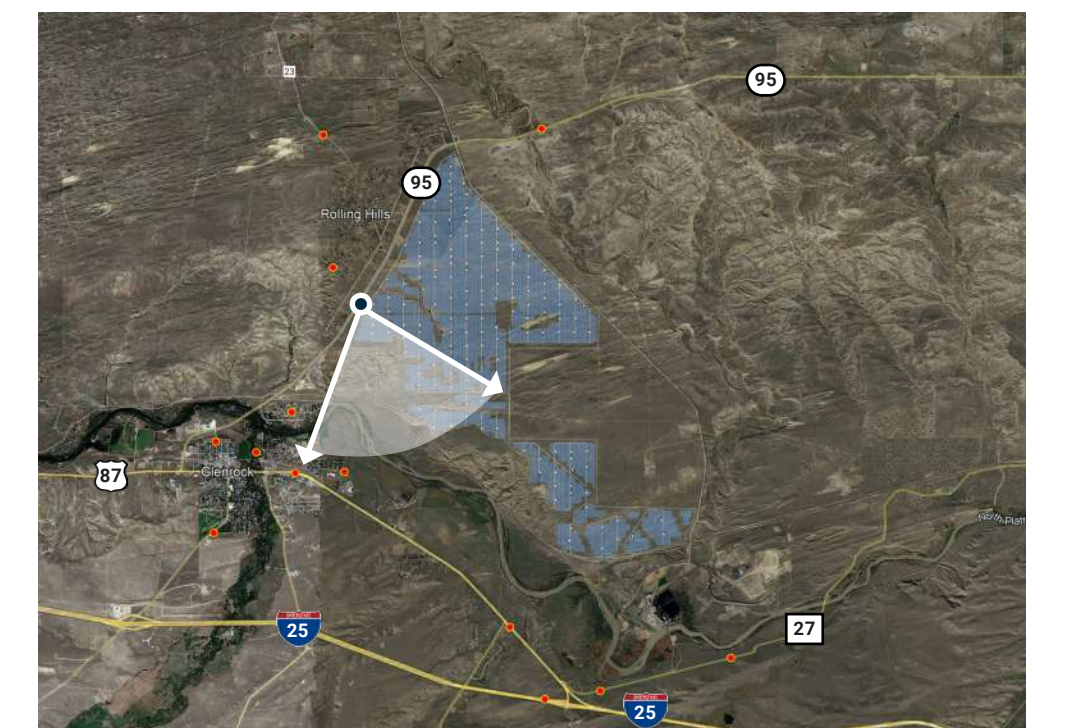
Latitude: 42.888496°

Longitude: -105.843297°

Weather Condition

Partly Cloudy

KEY VIEW MAP



Disclaimer

A grading plan was not provided prior to preparation of the simulations, therefore, the simulations are shown on existing topography without proposed grading.

VIEWPOINT 4

Original Layout

HIGHWAY 95



Print Guide / Image Notes:

This sheet should be printed at 22 by 34 inches; full size with no scaling; and viewed at 18 inches away.
If viewed on a computer monitor, the document should be scaled to 100 percent and viewed at 18 inches.

Visual Simulation

PHOTOGRAPH INFORMATION

Date and Time

11/13/2022, 1:57 PM

Camera Information

Nikon Z7, Focal Length 50mm

Viewing Direction

Southeast

Geolocation

Latitude: 42.888496°

Longitude: -105.843297°

Weather Condition

Partly Cloudy

Distance to the nearest element

160 ft to perimeter fence

KEY VIEW MAP



VIEWPOINT 4

Updated Layout

HIGHWAY 95



Print Guide / Image Notes:

This sheet should be printed at 22 by 34 inches; full size with no scaling; and viewed at 18 inches away.
If viewed on a computer monitor, the document should be scaled to 100 percent and viewed at 18 inches.

Visual Simulation

PHOTOGRAPH INFORMATION

Date and Time

11/13/2022, 1:57 PM

Camera Information

Nikon Z7, Focal Length 50mm

Viewing Direction

Southeast

Geolocation

Latitude: 42.888496°

Longitude: -105.843297°

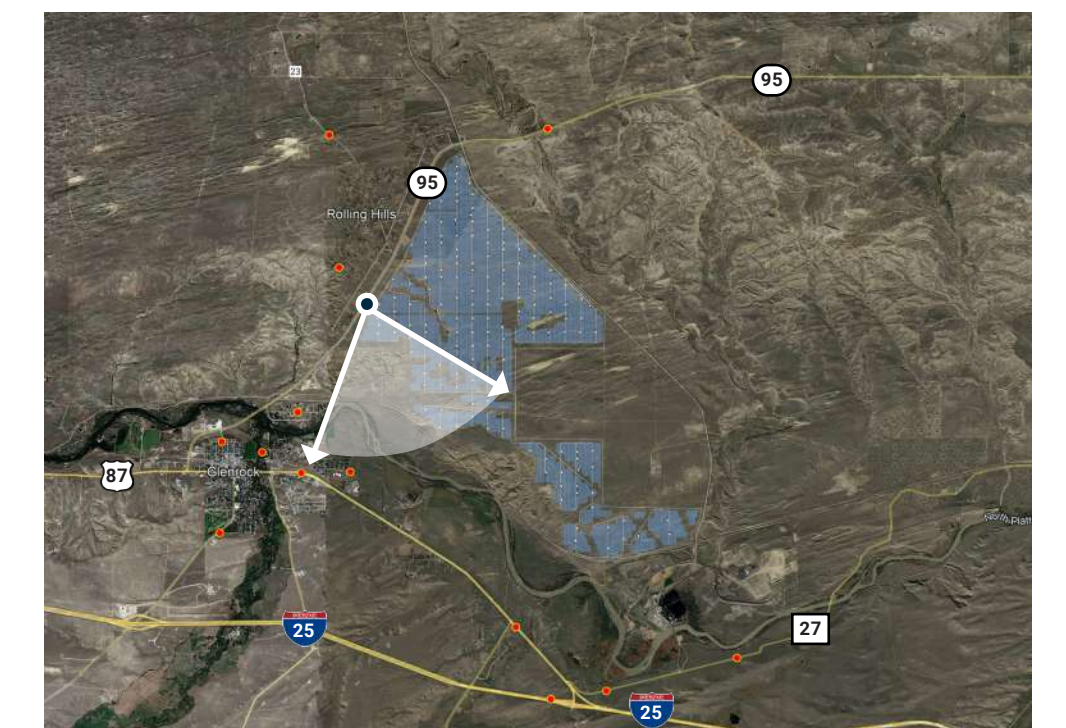
Weather Condition

Partly Cloudy

Distance to the nearest element

520 ft to perimeter fence

KEY VIEW MAP



Disclaimer

A grading plan was not provided prior to preparation of the simulations, therefore, the simulations are shown on existing topography without proposed grading.

VIEWPOINT 5

OREGON TRAIL
STREET



Existing Condition

PHOTOGRAPH INFORMATION

Date and Time

11/13/2022, 2:52 PM

Camera Information

Nikon Z7, Focal Length 50mm

Viewing Direction

Northeast

Geolocation

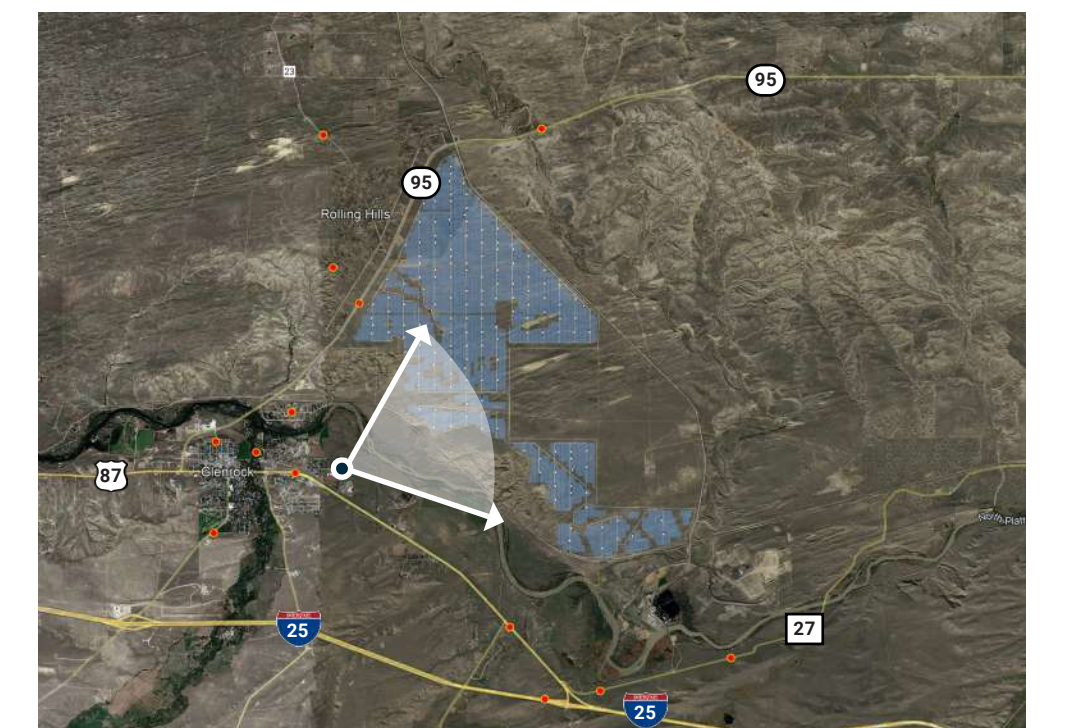
Latitude: 42.861381°

Longitude: -105.846525°

Weather Condition

Partly Cloudy

KEY VIEW MAP



Version:

Simulated per Site Design version
20231018-US-WY-DUTC-IFP-ALPVS-NG-V00-R15.dwg

Print Guide / Image Notes:

This sheet should be printed at 22 by 34 inches; full size with no scaling; and viewed at 18 inches away.
If viewed on a computer monitor, the document should be scaled to 100 percent and viewed at 18 inches.

Disclaimer

A grading plan was not provided prior to preparation of the simulations, therefore, the simulations are shown on existing topography without proposed grading.

VIEWPOINT 5

OREGON TRAIL
STREET

Original Layout



Print Guide / Image Notes:

This sheet should be printed at 22 by 34 inches; full size with no scaling; and viewed at 18 inches away.
If viewed on a computer monitor, the document should be scaled to 100 percent and viewed at 18 inches.

Visual Simulation

PHOTOGRAPH INFORMATION

Date and Time

11/13/2022, 2:52 PM

Camera Information

Nikon Z7, Focal Length 50mm

Viewing Direction

Northeast

Geolocation

Latitude: 42.861381°

Longitude: -105.846525°

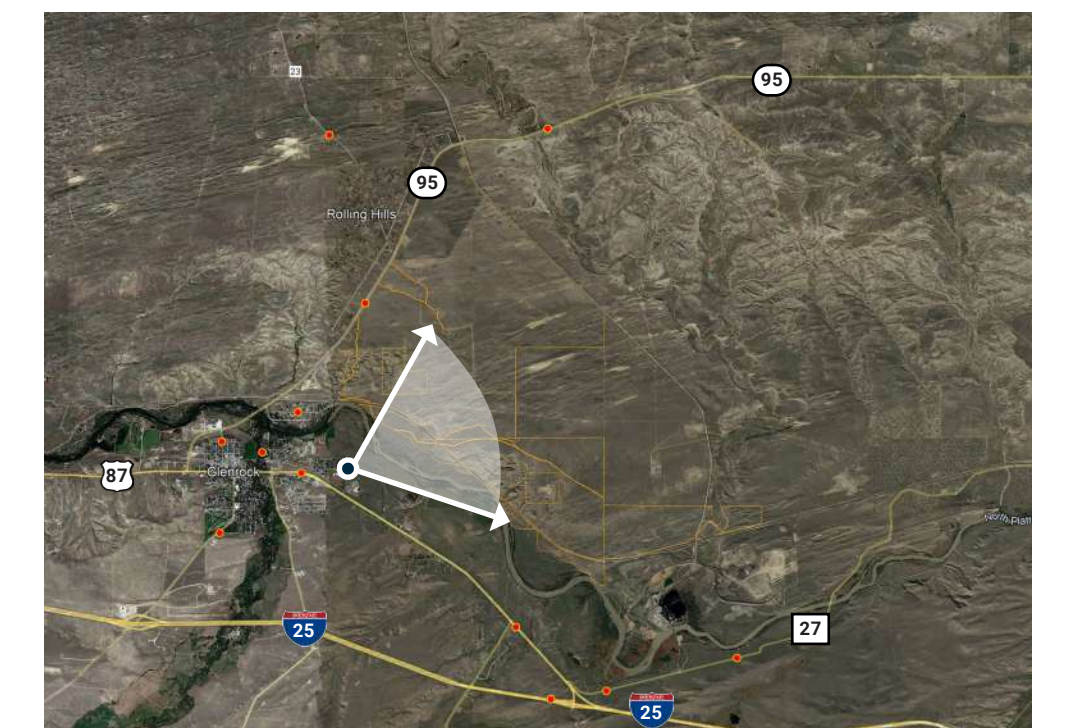
Weather Condition

Partly Cloudy

Distance to the nearest element

1 mile to perimeter fence

KEY VIEW MAP



VIEWPOINT 5

Updated Layout

OREGON TRAIL
STREET



Print Guide / Image Notes:

This sheet should be printed at 22 by 34 inches; full size with no scaling; and viewed at 18 inches away.
If viewed on a computer monitor, the document should be scaled to 100 percent and viewed at 18 inches.

Visual Simulation

PHOTOGRAPH INFORMATION

Date and Time

11/13/2022, 2:52 PM

Camera Information

Nikon Z7, Focal Length 50mm

Viewing Direction

Northeast

Geolocation

Latitude: 42.861381°

Longitude: -105.846525°

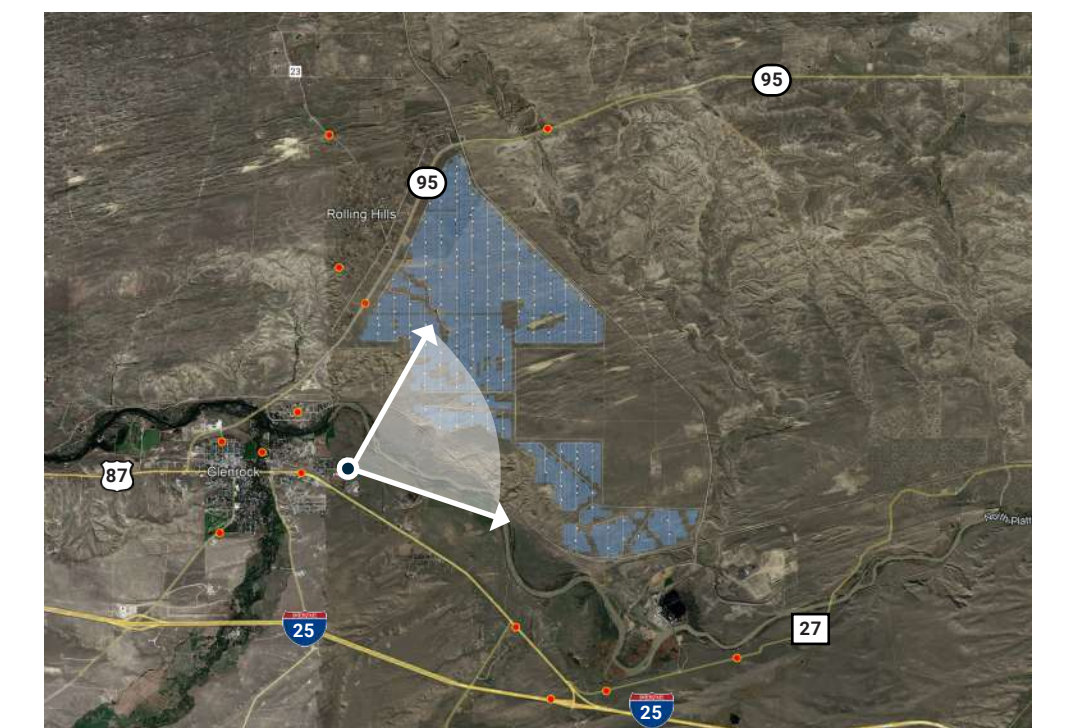
Weather Condition

Partly Cloudy

Distance to the nearest element

1 mile to perimeter fence

KEY VIEW MAP



Disclaimer

A grading plan was not provided prior to preparation of the simulations, therefore, the simulations are shown on existing topography without proposed grading.

VIEWPOINT 6

E BIRCH STREET



Print Guide / Image Notes:

This sheet should be printed at 22 by 34 inches; full size with no scaling; and viewed at 18 inches away.
If viewed on a computer monitor, the document should be scaled to 100 percent and viewed at 18 inches.

Existing Condition

PHOTOGRAPH INFORMATION

Date and Time

11/13/2022, 2:42 PM

Camera Information

Nikon Z7, Focal Length 50mm

Viewing Direction

Northeast

Geolocation

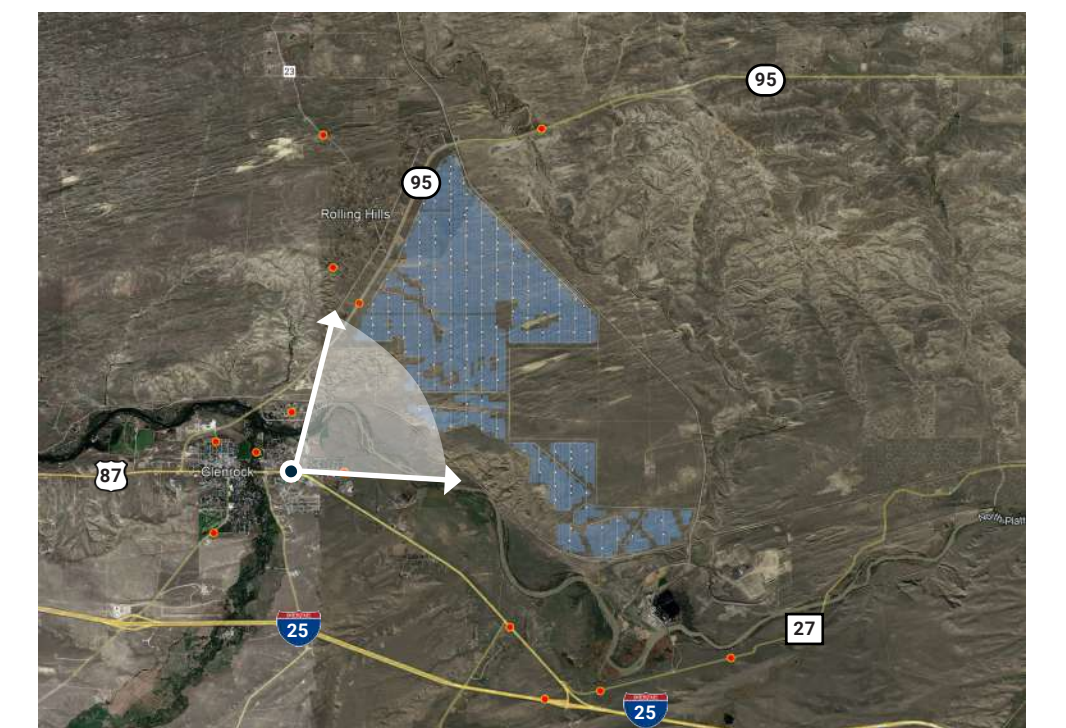
Latitude: 42.861226°

Longitude: -105.857289°

Weather Condition

Partly Cloudy

KEY VIEW MAP



Disclaimer

A grading plan was not provided prior to preparation of the simulations, therefore, the simulations are shown on existing topography without proposed grading.

VIEWPOINT 6

E BIRCH STREET

Original Layout



Print Guide / Image Notes:

This sheet should be printed at 22 by 34 inches; full size with no scaling; and viewed at 18 inches away.
If viewed on a computer monitor, the document should be scaled to 100 percent and viewed at 18 inches.

Visual Simulation

PHOTOGRAPH INFORMATION

Date and Time

11/13/2022, 2:42 PM

Camera Information

Nikon Z7, Focal Length 50mm

Viewing Direction

Northeast

Geolocation

Latitude: 42.861226°

Longitude: -105.857289°

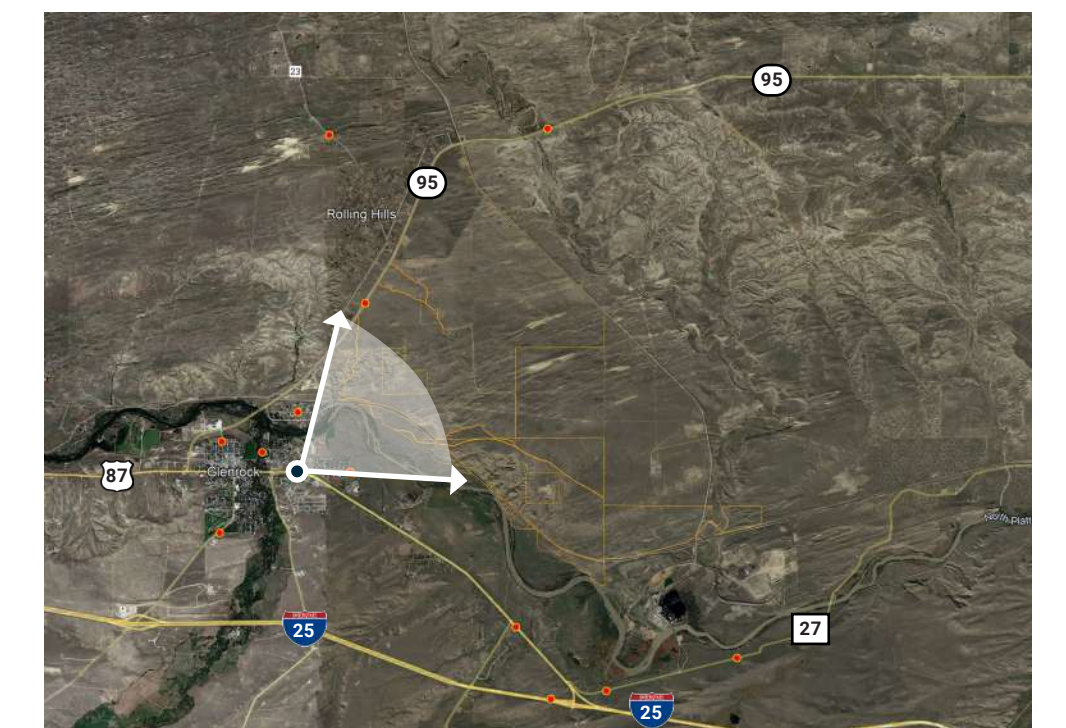
Weather Condition

Partly Cloudy

Distance to the nearest element

1.4 miles to perimeter fence

KEY VIEW MAP



VIEWPOINT 6

E BIRCH STREET

Updated Layout



Print Guide / Image Notes:

This sheet should be printed at 22 by 34 inches; full size with no scaling; and viewed at 18 inches away.
If viewed on a computer monitor, the document should be scaled to 100 percent and viewed at 18 inches.

Visual Simulation

PHOTOGRAPH INFORMATION

Date and Time

11/13/2022, 2:42 PM

Camera Information

Nikon Z7, Focal Length 50mm

Viewing Direction

Northeast

Geolocation

Latitude: 42.861226°

Longitude: -105.857289°

Weather Condition

Partly Cloudy

Distance to the nearest element

1.4 miles to perimeter fence

KEY VIEW MAP



Disclaimer

A grading plan was not provided prior to preparation of the simulations, therefore, the simulations are shown on existing topography without proposed grading.

VIEWPOINT 13

INTERSTATE 25



Print Guide / Image Notes:

This sheet should be printed at 22 by 34 inches; full size with no scaling; and viewed at 18 inches away.
If viewed on a computer monitor, the document should be scaled to 100 percent and viewed at 18 inches.

Existing Condition

PHOTOGRAPH INFORMATION

Date and Time

11/13/2022, 3:23 PM

Camera Information

Nikon Z7, Focal Length 50mm

Viewing Direction

North

Geolocation

Latitude: 42.824891°

Longitude: -105.802531°

Weather Condition

Overcast

KEY VIEW MAP



Disclaimer

A grading plan was not provided prior to preparation of the simulations, therefore, the simulations are shown on existing topography without proposed grading.

VIEWPOINT 13 Original Layout

INTERSTATE 25



Print Guide / Image Notes:
This sheet should be printed at 22 by 34 inches; full size with no scaling; and viewed at 18 inches away.
If viewed on a computer monitor, the document should be scaled to 100 percent and viewed at 18 inches.

Visual Simulation

PHOTOGRAPH INFORMATION

Date and Time
11/13/2022, 3:23 PM

Camera Information
Nikon Z7, Focal Length 50mm

Viewing Direction
North

Geolocation
Latitude: 42.824891°
Longitude: -105.802531°

Weather Condition
Overcast

Distance to the nearest element
1.6 miles to perimeter fence

KEY VIEW MAP



VIEWPOINT 13 Updated Layout

INTERSTATE 25



Print Guide / Image Notes:
This sheet should be printed at 22 by 34 inches; full size with no scaling; and viewed at 18 inches away.
If viewed on a computer monitor, the document should be scaled to 100 percent and viewed at 18 inches.

Visual Simulation

PHOTOGRAPH INFORMATION

Date and Time
11/13/2022, 3:23 PM

Camera Information
Nikon Z7, Focal Length 50mm

Viewing Direction
North

Geolocation
Latitude: 42.824891°
Longitude: -105.802531°

Weather Condition
Overcast

Distance to the nearest element
1.6 miles to perimeter fence

KEY VIEW MAP



Disclaimer
A grading plan was not provided prior to preparation of the simulations, therefore, the simulations are shown on existing topography without proposed grading.

VIEWPOINT 10

GLENROCK



Print Guide / Image Notes:

This sheet should be printed at 22 by 34 inches; full size with no scaling; and viewed at 18 inches away.
If viewed on a computer monitor, the document should be scaled to 100 percent and viewed at 18 inches.

Existing Condition

PHOTOGRAPH INFORMATION

Date and Time

11/13/2022, 2:25 PM

Camera Information

Nikon Z7, Focal Length 50mm

Viewing Direction

Northeast

Geolocation

Latitude: 42.851563°

Longitude: -105.875207°

Weather Condition

Partly Cloudy

KEY VIEW MAP



Disclaimer

A grading plan was not provided prior to preparation of the simulations, therefore, the simulations are shown on existing topography without proposed grading.

VIEWPOINT 10 Updated Layout

GLENROCK



Print Guide / Image Notes:
This sheet should be printed at 22 by 34 inches; full size with no scaling; and viewed at 18 inches away.
If viewed on a computer monitor, the document should be scaled to 100 percent and viewed at 18 inches.

Visual Simulation

PHOTOGRAPH INFORMATION

Date and Time
11/13/2022, 2:25 PM

Camera Information
Nikon Z7, Focal Length 50mm

Viewing Direction
Northeast

Geolocation
Latitude: 42.851563°
Longitude: -105.875207°

Weather Condition
Partly Cloudy

Distance to the nearest element
2.4 miles to perimeter fence

KEY VIEW MAP



Disclaimer
A grading plan was not provided prior to preparation of the simulations, therefore, the simulations are shown on existing topography without proposed grading.

VIEWPOINT 14

ROLLING HILLS



Print Guide / Image Notes:

This sheet should be printed at 22 by 34 inches; full size with no scaling; and viewed at 18 inches away.
If viewed on a computer monitor, the document should be scaled to 100 percent and viewed at 18 inches.

Existing Condition

PHOTOGRAPH INFORMATION

Date and Time

5/23/2022, 7:46 AM

Camera Information

SONY ILCE-7RM3,
Focal Length 55mm

Viewing Direction

Northeast

Geolocation

Latitude: 42.894081°
Longitude: -105.848735°

Weather Condition

Partly Cloudy

KEY VIEW MAP



Disclaimer

A grading plan was not provided prior to preparation of the simulations, therefore, the simulations are shown on existing topography without proposed grading.

VIEWPOINT 14 Updated Layout

ROLLING HILLS



Print Guide / Image Notes:

This sheet should be printed at 22 by 34 inches; full size with no scaling; and viewed at 18 inches away.
If viewed on a computer monitor, the document should be scaled to 100 percent and viewed at 18 inches.

Visual Simulation

PHOTOGRAPH INFORMATION

Date and Time

5/23/2022, 7:46 AM

Camera Information

SONY ILCE-7RM3,
Focal Length 55mm

Viewing Direction

Northeast

Geolocation

Latitude: 42.894081°
Longitude: -105.848735°

Weather Condition

Partly Cloudy

Distance to the nearest element

0.5 mile to perimeter fence

KEY VIEW MAP



Disclaimer

A grading plan was not provided prior to preparation of the simulations, therefore, the simulations are shown on existing topography without proposed grading.